



## 4 Inch Indoor LED Downlights

### Our Product Introduction

#### Basic Information

- Place of Origin: Guang dong
- Brand Name: HG
- Certification: CE, EMC
- Model Number: XT-D16-4F-12W
- Minimum Order Quantity: 1 Piece/Pieces
- Price: Negotiation



#### Product Specification

- Light Source: LED
- Item Type: Downlights
- LED Light Source: Espitar
- Input Voltage(V): AC85-265V
- Lamp Body Material: Aluminum
- Certificates: CE, RoHS
- Friendly: No IR And UV Radiation
- Product Uses: Hotels, Shopping Malls, Exhibition Halls, Office Buildings, Museums
- Cover: Frosted PC
- Highlight: led slim downlights

## Product Description

### Indoor LED Ceiling Downlights 4 Inch 12w Shallow Depth LED Downlights CE / Rohs Approved

Indoor LED Ceiling Downlights is a lamp with a screw head, which can be directly fitted with incandescent lamp or energy-saving lamp. Tube lamp is a kind of illumination lamp embedded in the ceiling.

This kind of concealed luminaire embedded in the ceiling, all light is projected downward, belongs to direct light distribution. Different reflectors, lenses, shutters and bulbs can be used to achieve different light effects. If you want to create a warm feeling, you can try to install more than one tube lamp to alleviate the sense of space oppression. Generally, it is used more in hotels, families and cafes.



#### Advantages

angle 120°	Epistar SMD LEDs	IP54	Anti-glare diffuser
------------	------------------	------	---------------------

\*Beam angle 120°, light more area.

\*Epistar SMD LEDs and Isolated constant current IC driver.

\*Many size of the cut hole for option.

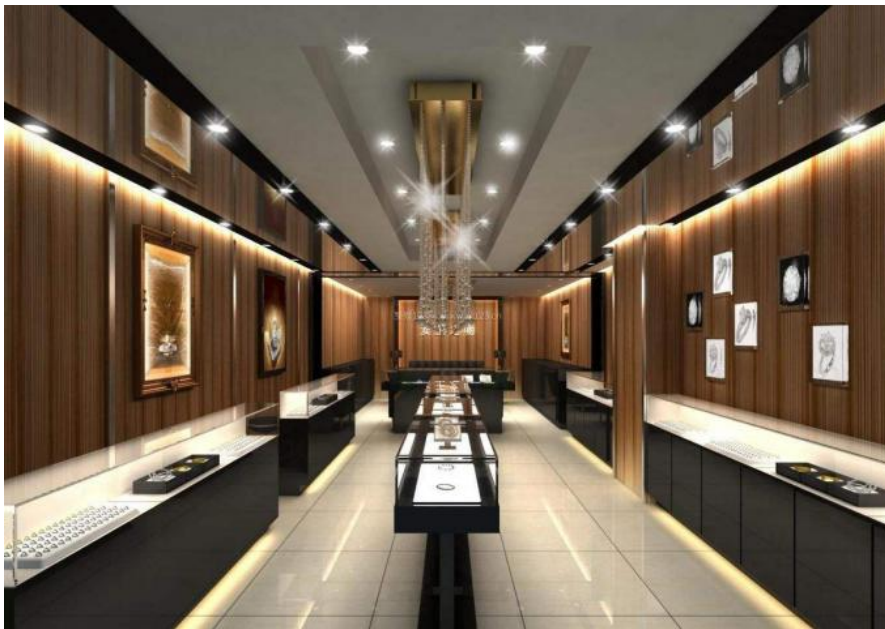
\*Anti-glare diffuser.

\*With IP54 dustproof waterproof level.

\*With aluminum housing, white painted panel ring, black heat sink, exquisite heat dissipation structure design.

\*PMMA cover for nice appearance and good rigidity, also with excellent transparency.

\*Spring clips easy to install, save time and work for maintenance; And save labor cost, also be safer for connecting power.



## Company details

---

### Our Services

#### Warranty terms:

- 1). 3-5 years Warranty since the date of purchase.
- 2). Under the terms of this warranty, if the product has a failure occurs in normal usage within warranty period, we will provide free new products based on the proof-documents.
- 3). If failure or damage due to incorrect operation, wire connection, or anything other do not follow our instruction, will provide paid maintenance within warranty period

### Packaging & Shipping

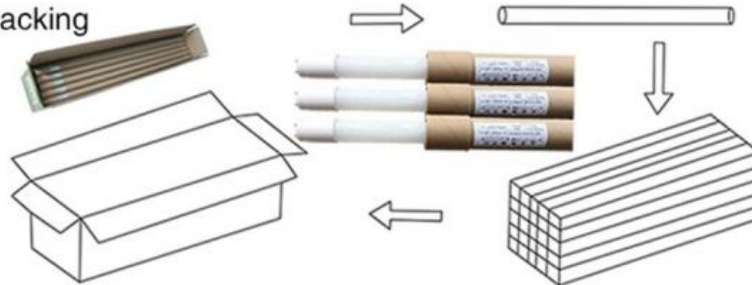


## Packing and Shipping

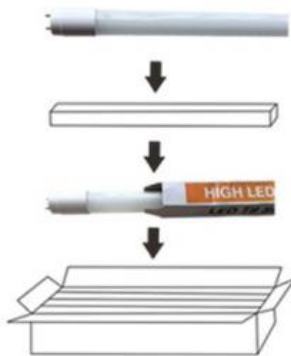
Big quantity advised to be shipped by sea.  
Samples advised to be shipped by express.  
Small quantity advised to be shipped by air.

T8 9w 600mm — 13kg, 50pcs/ctn, 65 \* 23 \* 44cm  
T8 13w 900mm — 9kg, 25pcs/ctn, 95 \* 23 \* 24cm  
T8 18w 1200mm — 13kg, 25pcs/ctn, 125 \* 23 \* 24cm  
T8 24w 1500mm — 17kg, 25pcs/ctn, 155 \* 23 \* 24cm

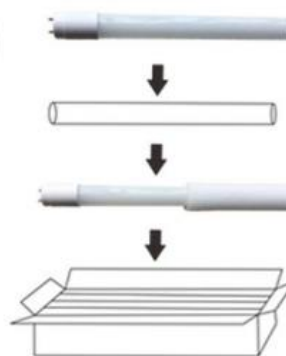
### 1 Packing



### 2



### 3



### Shipping



### FAQ

#### Q1. Can I have a sample order for led light?

A: Yes, we welcome sample order to test and check quality. Mixed samples are acceptable.

#### Q2. What about the lead time?

A: Sample needs 3-5 days, mass production time needs 1-2 weeks for order quantity more than

#### Q3. How do you ship the goods and how long does it take to arrive?

A: We usually ship by DHL, UPS, FedEx or TNT. It usually takes 3-5 days to arrive. Airline and sea shipping also optional.

#### Q4. Is it OK to print my logo on led light product?

A: Yes. Please inform us formally before our production and confirm the design firstly based on our sample.

#### Q5. Do you offer guarantee for the products?

A: Yes, we offer 2-5 years warranty to our products.

#### Q6. How to deal with the faulty?

A: Firstly, Our products are produced in strict quality control system and the defective rate will be less than 0.2%.

Secondly, during the guarantee period, we will send new lights with new order for small quantity. For defective batch products, we will repair them and resend them to you or we can discuss the solution including re-call according to real situation.

**Q7.Do you have any MOQ limit for led light order?**

A: Low MOQ, 1pc for sample checking is available

**Q8.How to proceed an order for led light?**

A: Firstly let us know your requirements or application.

Secondly We quote according to your requirements or our suggestions.

Thirdly customer confirms the samples and places deposit for formal order.

Fourthly We arrange the production.

合作案例

CASES



Import and export business



Sincere cooperation

**SOLAR  LIGHT Beijing Silk Road Enterprise Management Services Co.,LTD**



17733330123



miclecleanmo@gmail.com



solarpanelstreetlight.com

No 41, Dongsihuan Zhong Road, Chaoyang District, Beijing, 100025, P.R.C