



Round LED Recessed Downlights , LED Recessed Lighting Fixtures 5W 18W Aluminium Body IC Driver

Our Product Introduction

for more products please visit us on solarpanelstreetlight.com

Basic Information

- Place of Origin: China
- Brand Name: MINSSENS
- Certification: CE ROHS DLC ETL
- Model Number: MS-DWL-5W 9W 12W 18W
- Minimum Order Quantity: 100pcs
- Price: Negotiable
- Packaging Details: Standard export packaging or customize
- Delivery Time: 5-10 work days
- Payment Terms: L/C, D/A, D/P, T/T, Western Union, MoneyGram
- Supply Ability: 1000000pcs per month



Product Specification

- Lamp Power: 5W 9W 12W 18W
- Input Voltage(V): AC100-240V
- Lumens: 90-100LM/W
- Beam Angle: 120°
- CRI: >80
- Lamp Body Material: Aluminum Alloy +PC
- Color Temperature: 2800~7000K
- Diameter: $\Phi 98$ $\Phi 122$ $\Phi 140$ $\Phi 170$ mm
- Cut: $\Phi 75$ $\Phi 100$ $\Phi 120$ $\Phi 150$ mm
- Cover: Scrub Cover
- LED Light Source: Epistar SMD2835
- Warranty: 3 Years
- Highlight: led down lamp



More Images



Product Description

Round 5W 9W 12W 18W Aluminium Body IC Driver AC100 - 240V SMD2835 LED Recessed

Downlights Fixtures

Description

1. LED Downlight is friendly environment, energy saving, long lifespan. 14W LED Downlight can replace 120W traditional incandescent lamp.
2. The lenses are with diffuser to prevent from glare.
3. The lamp is made of die-cast aluminum to keep good heat dissipation to prolong its lifespan and save energy over 10 times than traditional energy-saving lamp.
4. Using isolated constant current drive power, it is with short circuit, open circuit protection, safety and reliability adaptable to wide range voltage.
5. No mercury and other harmful substances. No ultraviolet or infrared radiation.
6. Long lifespan, energy saving, environmental protection, low power consumption and low calorie and low cost.
7. Low light decay, lifespan: >50000hours.

Specification

Type	Inches	Power	Input voltage	lumens	CCT	LED chips	Size(m m)	Cut
MS-DLC-5W	2.5'	5W	AC100-240V 50-60Hz	400-500LM	2800K-3200K 4000K-4500K 6000K-6500K	Epistar SMD	Φ98	Φ75-80mm
MS-DLC-9W	3.5'	9W	AC100-240V 50-60Hz	750-900LM	2800K-3200K 4000K-4500K 6000K-6500K	Sanan SMD	Φ122	Φ100-110mm
MS-DLC-12W	4'	12W	AC100-240V 50-60Hz	1000-1200LM	2800K-3200K 4000K-4500K 6000K-6500K	Sanan SMD	Φ140	Φ120-130mm
MS-DLC-18W	6'	18W	AC100-240V 50-60Hz	1600-1800LM	2800K-3200K 4000K-4500K 6000K-6500K	Sanan SMD	Φ170	Φ150-155mm

Details

1. Downlight Shell (housing): high thermal-conductivity Aluminium (Anti-aging, UV-protection, anti-striking...)
2. PCB: high-precision aluminum cut, anodized and sandblasted.
3. COB: surface emitting (reducing light luminosity loss and cooling performance)
4. Lens: PMMA materials (light transmittance: >92%)
5. Radiator: precision-thickening and finned heat sink (keeping better heat dissipation)
6. Drive: intelligent IC with constant current design
7. Mould: new-style and special

5W



9W

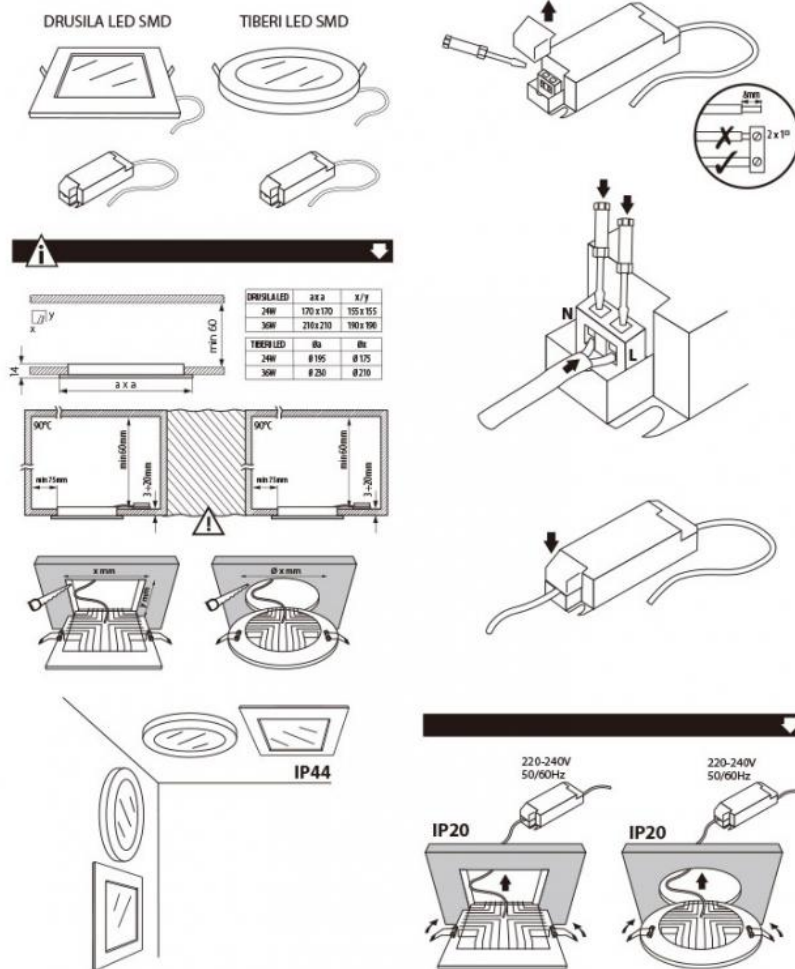


12W



18W





Applications

Shopping malls ,Restaurants, meeting rooms,Hall, home,Interior lighting, partial lighting and office. Especially suitable for public areas like lobbies, corridor and stairwells



Packaging

Standard export packaging or customized according to customer requirements

SOLAR LIGHT Beijing Silk Road Enterprise Management Services Co.,LTD



17733330123



miclecleanmo@gmail.com



solarpanelstreetlight.com

No 41, Dongsihuan Zhong Road, Chaoyang District, Beijing, 100025, P.R.C