



## 10W Waterproof SMD LED Downlight IP65 Aluminum White Milky Cover 800LM

### Our Product Introduction

#### Basic Information

- Place of Origin: China
- Brand Name: ADO
- Certification: CE ROHS
- Model Number: AD-DL-10W-WP2
- Minimum Order Quantity: One Carton
- Price: Negotiation
- Packaging Details: 10 Pieces One Carton
- Delivery Time: 3-7 work days
- Payment Terms: T/T, Paypal, Western Union
- Supply Ability: 10,000 pcs per day



#### Product Specification

- IP Level: IP65
- LED Chip: SMD2835
- Cover: Milky
- Lumen: 800LM
- Fixture Color: White
- Material: Aluminum
- Highlight: **waterproof led downlights**



#### More Images



## Product Description

### 10W Waterproof SMD LED Down Light IP65 Aluminum White Milky Cover 800LM 80Ra

#### 1. LED Down Light Features:

1. 10W-20W for option. 3 years warranty
2. COB LED chip. CRI: 80Ra. Can reach up to 90LM/W
3. Use external isolate constant current power driver, PF>0.95, IP65 CE driver
4. 100% waterproof, IP65 level.
5. Elegant design, white fixture

#### 2. Advantages:

1. Anti-shock, anti-moisture.
2. Advanced constant current driver.
3. No flickering, No RF interference, No UV radiation,
4. Body temperature less than 53 °C,
5. Easy installation, maintenance free.
6. Professional thermal management.
7. Great heat dissipation due to unique structural design.

#### 3. Applications:

1. Residential Buildings;
2. Home, Office, Meeting Room, School,;
3. Library, Factory, Warehouse, Hotel, Casino, Parking Garage;
4. Hospital, Commercial Center, Supermarket, Shopping mall, anywhere you want.

#### 4. 10W Waterproof SMD LED Down Light Specification:

10W waterproof LED Down Light	
Power	10W
LED Light Source	SMD2835 led chip
Lumen	800LM/W
CCT	2700-6500K
CRI	Ra>80
Beam Angle	120°
Warranty	3 years
IP Level	IP65
Housing color	White
LED Driver	CE constant IP65 waterpoo 0.95PFC led driver
Material	Aluminum+Glass
Work Environment	
Voltage	AC85-265V/50-60Hz
Working Temperature	-30 ~50
Application	Airport, Bedroom, Car Park, Church, Cinema, Gallery, Hotel, Shopping mall

#### 5. 10W 15W 20W SMD LED Down Light Parameter:

LED COB Waterproof Downlight			
Model	AD-DL-10W-WP1	AD-DL-15W-WP1	BST-SDH-20W
Input Voltage	AC85-265V		
Power	10W	15W	20W
Lumens	800-900LM	1200-1350LM	1600-1800LM

## 6. Packaging Information:

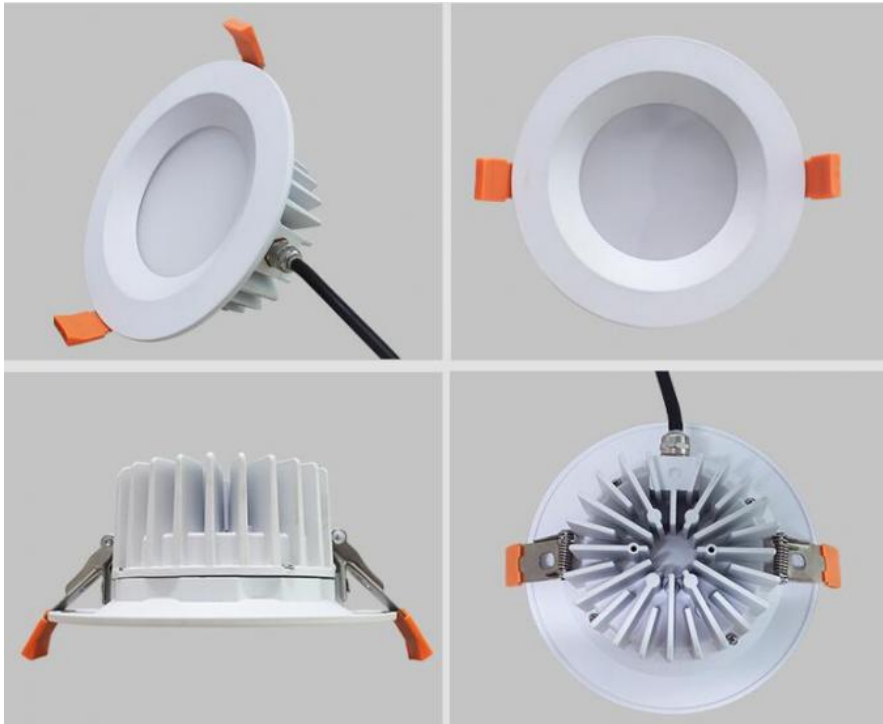
2.5" led down light Carton size: 575\*350\*360MM 45PCS/CTN Gross weight: 17.5KG  
3.5" led down light Carton size: 400\*400\*405MM 27PCS/CTN Gross weight: 16.5KGKG  
4-5" led down light Carton size: 500\*340\*405MM 18PCS/CTN Gross weight: 14.5KG  
6" led down light Carton size: 410\*410\*400MM 12PCS/CTN Gross weight: 12.5KG  
8" led down light Carton size: 510\*510\*400MM 12PCS/CTN Gross weight: 17.5KG

## 7. Our Services:

- A. Small Quantity is available, MOQ is 10pcs
- B. Samples can be shipped by DHL/FedEx/UPS/TNT
- C. Customized package design with company logo based on the order quantity of 1000pcs
- D. Discounts are negotiable according to large quantities.
- E. Payment can be paid by Paypal/TT/Western Union
- F. 30% advance payment, 70% balance before shipment
- G. Any defective products can be replaced in the next order during 2 years warranty period.
- H. Delivery time is 3-5days for samples, 7-10days for bulk order

## 8. Why Choose Ado Lighting:

- 1. High and Steady Quality
- 2. Very Favorable and Attractive Price
- 3. Small Quantity allowed (Trial Order Also Welcomed)
- 4. 100% New Products
- 5. Large Stocks (Stable Supply Ability)



**SOLAR LIGHT Beijing Silk Road Enterprise Management Services Co.,LTD**



17733330123



miclecleanmo@gmail.com



solarpanelstreetlight.com

No 41, Dongsihuan Zhong Road, Chaoyang District, Beijing, 100025, P.R.C