



## Aluminum White Industrial LED Flood Lights 10w 20w 50w 100w 150w Meanwell Driver

### Our Product Introduction

for more products please visit us on [solarpanelstreetlight.com](http://solarpanelstreetlight.com)

#### Basic Information

- Place of Origin: China (Mainland)
- Brand Name: HKV
- Certification: CE, ROHS
- Model Number: HKV-TG3B-10
- Minimum Order Quantity: 1
- Price: Negotiated
- Packaging Details: 1Pcs/carton, Neutral Packing
- Delivery Time: 5-30 days after we received payment
- Payment Terms: D/P, T/T, Western Union
- Supply Ability: 2500pcs per week



#### Product Specification

- Product Name: Aluminum White Light LED Industrial Flood Lights 10w 20w 50w 100w 150w 200w
- Power: 10, 20, 30, 50, 80, 100, 150, 200W, Optional
- Beam Angle: 120° , Optional
- Driver: Meanwell
- Carton Size: 55\*55\*40cm
- Luminous Flux (lm/W): 120lm/W
- Highlight: exterior led flood lights



#### More Images



## Product Description

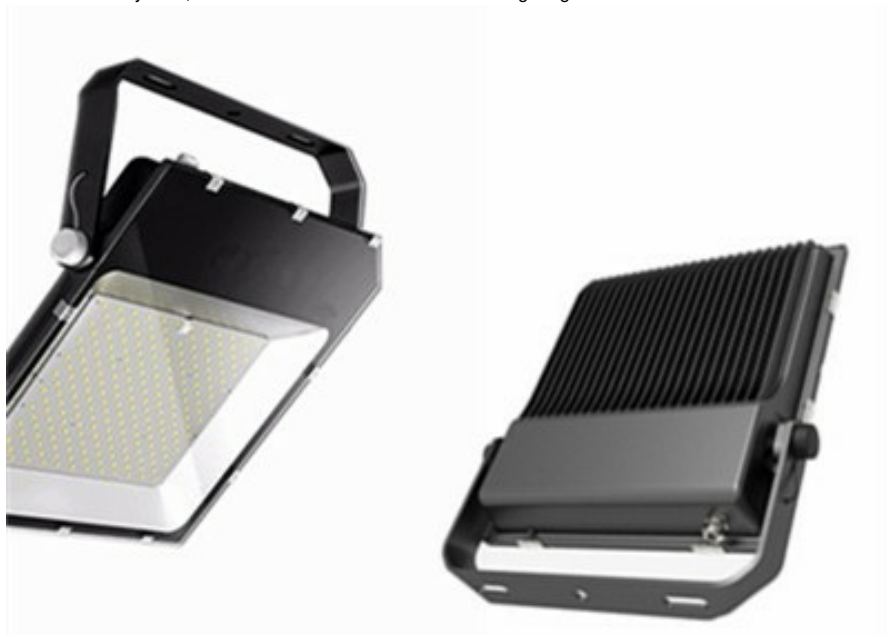
### Aluminum White Light LED Industrial Flood Lights 10w 20w 50w 100w 150w 200w

#### Specifications:

Item Name	10W	100W
Material	Aluminum	
Input	AC100-265v	
Power Factor	0.95	
Light Color	4000k, 5000k, 6000k, optional	
Beam Angle	120°	
Luminous Efficiency	120lm/w	120lm/w
Luminous	1200lm	12000lm

#### Product Descriptions:

- Premium Precise Optical Lens System, 2-10 times brighter than conventional light
- Modular Design, each lens work independently,easier Maintenance
- Anti-Glare System, suitable for almost all indoor outdoor lighting



- Unique fin aluminium heatsink greatly reduce super bright led light weight and guarantee the safety usage, as well as to avoid the material wastage and the freight.
- By increasing the number of fins to enlarge the area of heat dissipation and air flow,this new heatsink significantly increase the efficiency of thermal conduction with less material usage and more saving on energy.
- There is hole on all aides of led light ,best to promote the air handling area, not only looks beauty,but also steady.
- The aluminium alloy material very strong,you even can clean it by high-pressure water gun.

#### Application

- Indoor settings, for track lighting, open ended recessed cans, hanging pendants, ceiling fans, and many directional fixtures for use in wall washing and accent lighting
- Outdoor settings, for many security lighting or flood lighting fixtures, down-lighting, up-lighting (socket protected by rubber seal), wall washing, and accent lighting fixtures.



### Shipping

More options for shipping your cargoes:

1. By express: DHL, UPS, FEDEX, TNT, USPS etc. delivery time for 3-7 days.
2. Air freight: when your cargoes are more than 100kg, air freight will be more economical than express.
3. Sea freight: shipping by SEA is available after customer tells us the destination port.
4. Agent designated by client: please tell us the contact details of your shipping agent / forwarder.

### Our Service

1. For all your inquiries about us or our products, we will reply you in detail within 24 hours
  2. We own well trained and passionate sales & after-sale services who can speak fluent English language
  3. We offer OEM services. Can print your own logo on product, can customize the retail box packing and other things.
  4. We have very experienced R&D engineers and we have strong ability to do ODM projects.
- Contact Details

### FAQ

#### 1. About EPES:

- 1) We are factory.
- 2) Engineer With 9 years' experience.
- 3) Professional suggestions according to information from clients and industry.

#### 2. About Quality Control:

- 1) For new products, use 15 days to do interactive box, baking test and other various tests to ensure the quality
- 2) Components will be checked in the end of each process and every product will be aged before packaging
- 3) Our own QC will check the goods before delivery
- 4) The defective rate of products is less than 0.2%

#### 3. About OEM/ODM:

- 1) OEM: Follow your design. (logo, package, etc)
- 2) ODM: Customized products

#### 4. About Delivery:

- 1) Sample: 3-7 days
- 2) Mass Production: 30-45 days
- 3) Port: Ningbo/Shanghai

#### 5. About Warranty:

- 1) 1 year: Economical products
- 2) 2 years: Conventional products
- 3) 3/5 years: Project use products

#### 6. About Payment Term:

L/C, T/T (pay online or offline)

**SOLAR LIGHT Beijing Silk Road Enterprise Management Services Co., LTD**



17733330123



miclecleanmo@gmail.com



solarpanelstreetlight.com

No 41, Dongsihuan Zhong Road, Chaoyang District, Beijing, 100025, P.R.C