



## Powerful LED Tunnel Lamp Outside Meanwell Driver Or Driver Optional

### Our Product Introduction

#### Basic Information

- Place of Origin: CHINA
- Brand Name: JULANG
- Certification: CE/EMC/LVD
- Model Number: JLTNL500W
- Minimum Order Quantity: 1PC for sample
- Price: USD250 TO USD500 / negotiable
- Packaging Details: EACH IN A BOX
- Delivery Time: 7-25 DAYS
- Payment Terms: L/C, T/T, Western Union
- Supply Ability: 3000PCS PER WEEK



#### Product Specification

- Item Type: Tunnel Lights
- Led Light Source: SMD3030,Bridgelux,famous Brand
- Lamp Body Material: Aluminium Alloy + PC
- Product Name: Led Tunnel Light,Led Tunnel Lamp,Factory Price Waterproof Modular 60 Watt Led Spotlight Tunnel Light,High Power IP65 Waterproof 50W 100W 200W 300W 400W Led Tunnel Light,High Lumen Waterproof IP65 Aluminum Housing 90w Led Tunnel Light
- Lamp Power(w): 500w
- Application: Warehouse,Tunnel,outdoor,Sport Stadium,Tunnel/playground/public Square/bridge
- Led Driver: Meanwell Driver, Driver,Constant-current Driver,Isolated
- Ip Rating: IP65
- Highlight: **high power led light**



## Product Description

### Hot Sale For High Power LED Light and LED Tunnel Lamp For Outside LED Lights

#### Product Features

1. Low power consumption. More than 60% energy saving compared to conventional.
2. Environmental friendly and Fashion black.
3. LED type: SMD3030
4. Applications: widely used in tunnel, subway, street, highway, square, billboard, exhibition hall, parking lot, gymnasium, park garden, any indoor or outdoor areas.

Product name:	Super Bright 2700 7000k Waterproof Ip65 500 Watt LED Flood Tunnel Light
Model No.:	JL-TNL-W500
Power:	500W
Working voltage:	AC100-277V, 50/60Hz;
PF:	> 0.97
IP Grade:	IP65
Color Temperature:	2700-7000K
Light Efficiency:	120-150lm/w
CRI:	>70Ra or 80Ra
LED chip:	Lumileds 3030
Heat sinks:	Aluminum
Body color:	Black
Net W./Gross W.:	9.0kgs / 10.0kgs
Packing size:	43*38*18CM
Warranty:	3-5 years
Certificates:	CE, RoHS
Application:	Outdoor areas,tennis courts,stadium,billboard,parking lot,shop,garden,etc

Item name: 500W led tunnel lights

Rated voltage: 85-265v

Rated wattage: 500w

Color temperature: 3000k to 6000k

Ra: 0.80

Power factor: 0.9

LED chip: smd3030

Lumen: 130-150lm/w

Total lumen: 75000lm

Driver: driver, Meanwell driver, Isolated driver

Body material: aluminium alloy + pc cover

Light angel: 60, 90, 120degree

Waterproof: IP65 or IP67

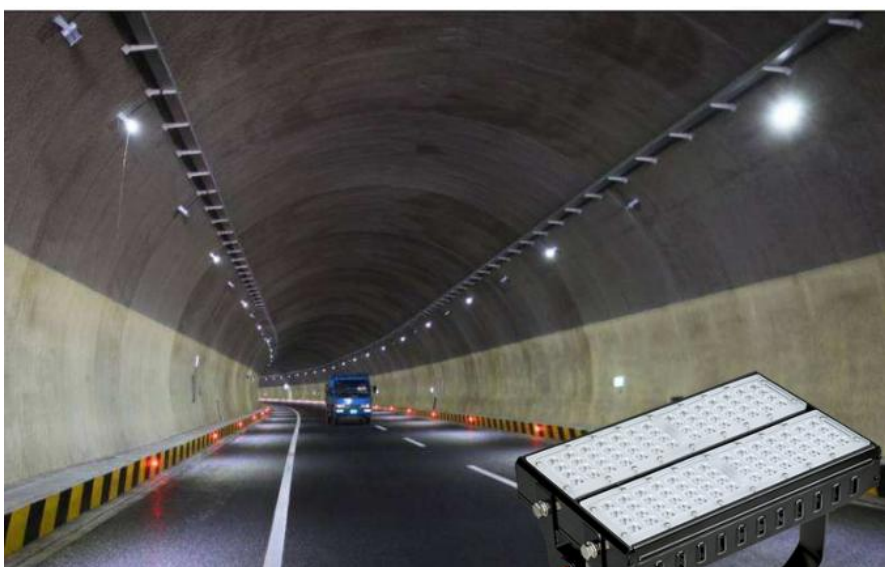
SPD: 4KV, 6KV, 10KV

Lifetime: 30000-50000hours

Warranty: 2 year to 5 years

Packing: each in a color box

Applications: warehouse, tunnel, street, sport stadium,outdoor, playground, square,bridge



© 2006 Blackwell Publishing Ltd  
Journal compilation © 2006 Blackwell Publishing Ltd

