



High Lumen Black LED Tunnel Light MHD Light Source For City Streets / Sidewalks

Our Product Introduction

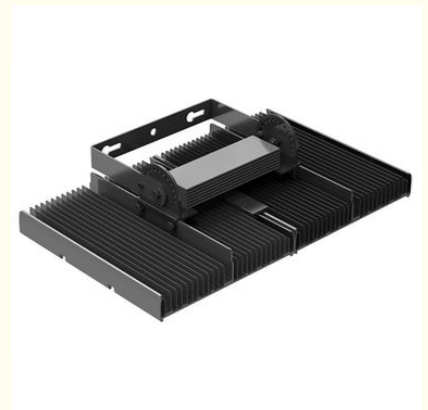
Basic Information

- Place of Origin: CHINA
- Brand Name: CO-SHINE
- Certification: CE Rohs
- Model Number: CS-FG-120W
- Minimum Order Quantity: 20
- Price: negotiation
- Packaging Details: Bubble bag + Carton
- Payment Terms: Western Union, L/C, T/T
- Supply Ability: 2000 pieces per Month



Product Specification

- Product Name: 120w Led Tunnel Light
- Material: Aluminum
- Power: 120w
- Input Voltage: AC90-277V
- Color Temperature: 3000-3500K,3500-4000K,4000-4500K,4500-5000K,5500K-6500K
- Beam Angle(°): 15°30°45°60°90°120°
- LED Chip: CREE
- Application: Building, Park Factory,Billboard ,tunnel ,warehouse,large Supper Market,stadiums, Docks ,or Other City Lighting Projects .
- Highlight: **high power led light**



Product Description

High Lumen 120w Led Tunnel Lights Cr>90 Waterproof Ip65 5years Warranty

Applications

LED tunnel Lights are widely used in other places need outdoor lighting trunk roads, highways, elevated roads, city streets, bridges, sidewalks and other road lighting, as well as squares, schools, residential areas, industrial zones and parks.

[2018 High quality LED Light New Price_201904151012...](#)

Main Specification	
Material	Aluminum
Input voltage	AC90-277V
Power	120W
LED Chip	CREE
Color temperature	3000-6500K
Luminous flux	15600lm
color	Black
waterproof	IP65
Warranty	5 years

Specification

1. CE, RoHS,UL,DLC, PSE Certificated.

2. IP level: IP65.

3. led chip:CREE.

4. luminous efficiency:130lm/w.

5. Beam Angle: 25 / 45 / 60 / 90 Degree.

6. Lead time: 3-5 days for samples, 7-15 days for bulk quantity order after receipt of deposit.

7. 3 years guarantee, If there is any problem, We will repair or change for free.

8. Applications: industrial space/business space/public space ,etc.

Features

Super brightness, good color rendering, low luminous decay.

High power, high efficiency, low energy consumption.

Shell: aluminum alloy materials.

Light source: with low attenuation process encapsulation of the LED white light.

Power supply: constant current; protection of over-current, over-voltage and high temperature.

Perfect lighting effect, fast starting, low power consumption, no ultraviolet and infrared radiation.

Benefits

- Directly replacing HPS/MHD light source
- Polygonal, easy to install and replace
- Utilizing same lighting fixture , saving investment cost

FAQ

Q1. Can I have a sample order for led light?

A: Yes, we welcome sample order to test and check quality. Mixed samples are acceptable.

Q2. What about the lead time?

A:Sample needs 3-5 days, mass production time needs 1-2 weeks for order quantity more than

Q3. Do you have any MOQ limit for led light order?

A: Low MOQ, 1pc for sample checking is available

Q4. How do you ship the goods and how long does it take to arrive?

A: We usually ship by DHL, UPS, FedEx or TNT. It usually takes 3-5 days to arrive. Airline and sea shipping also optional.

Q5. How to proceed an order for led light?

A: Firstly let us know your requirements or application.

Secondly We quote according to your requirements or our suggestions.

Thirdly customer confirms the samples and places deposit for formal order.

Fourthly We arrange the production.

Q6. Is it OK to print my logo on led light product?

A: Yes. Please inform us formally before our production and confirm the design firstly based on our sample.

Q7: Do you offer guarantee for the products?

A: Yes, we offer 3-5 years warranty to our products.

Q8: How to deal with the faulty?

A: Firstly, Our products are produced in strict quality control system and the defective rate will be less than 0.2%.

Secondly, during the guarantee period, we will send new lights with new order for small quantity. For defective batch products, we will repair them and resend them to you or we can discuss the solution including re-call according to real situation.



Beijing Silk Road Enterprise Management Services Co.,LTD



17733330123



miclecleanmo@gmail.com



solarpanelstreetlight.com

No 41, Dongsihuan Zhong Road, Chaoyang District, Beijing, 100025, P.R.C