

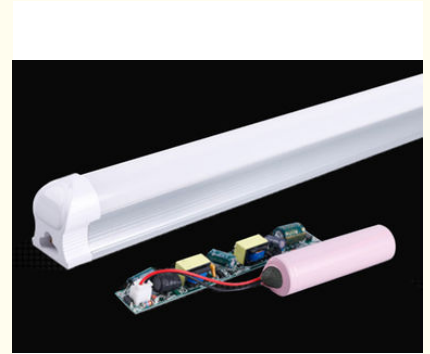


Tube Led 1200 Mm 18 Watts 2800-6500 K CCT With 1.5 Emergency Hours

Our Product Introduction

Basic Information

- Place of Origin: CHINA
- Brand Name: CO-SHINE
- Certification: CE RoHS
- Model Number: CS-BBTL-18W
- Minimum Order Quantity: 20
- Price: negotiation
- Packaging Details: 25pcs/carton, Carton size: 125*19*19cm
G.W.: 10KG
- Delivery Time: 3-5 days
- Payment Terms: Western Union, L/C, T/T, MoneyGram
- Supply Ability: 20,000PCS Per month



Product Specification

- Watt: 18W
- Base: T8 - G13
- Dimension: 1200mm
- LED Chip: Epistar SMD2835
- Lumen: 1900lm
- Material: Aluminum + PC
- Beam Angle: 120degree
- Emergency Time: 1.5 Hours
- Highlight: led grow light tubes



Product Description

1.2m 18w Battery Backup Emergency T8 Led Tube with 1.5 Emergency Hours

[2018 High quality LED Light New Price_201904151012...](#)

service:24-hour sales online ,10 years supplier

Features

- Latest LED technology
- Advanced Thermal sensitive lighting dimming control
- Equal to HPS/MHD Size
- One Size more Wattages
- Easy to install and connect
- Suitable for all the traditional light fixtures

Benefits

- Directly replacing HPS/MHD light source
- Polygonal, easy to install and replace
- Utilizing same lighting fixture , saving investment cost

Specification

Power	18W	Material	Aluminium+PC
LED Source	2835 SMD*96PCS	PC Cover	Frosted / Clear
Input Vol	85-265VAC 50-60HZ	CCT	2800-6500K
Power Factor	≥0.90	CRI	>80Ra
Beam angle	180°	Lumen	1800Lm
Discharge time	1 - 3 Hours	Lamp Base	T8- G13

Product description

Energy saving, saving more than 80% energy compare to traditional lights.

Cost savings, low consumption of power and the rate of conversion is over 95%.

Long life, normally used for more than 50,000hrs

Eco-friendly, no flicker, no harmful substances such as UV, infrared radiation, mercury elements.

Breakage Resistance: solid LED light source and not easy to damage.

1. CE, RoHS,UL,DLC, PSE Certificated.
2. IP level: IP55.
3. led chip:SMD2835
4. luminous efficiency:100lm / w
5. Material:Aluminium+PC
6. Lead time: 3-5 days for samples, 7-15 days for bulk quantity order after receipt of deposit.
7. 3 years guarantee, If there is any problem, We will repair or change for free.
8. Applications:Warehouse, workshop, factory, gas station, supermarket, hall ect.

FAQ

Q1. Can I have a sample order for led light?

A: Yes, we welcome sample order to test and check quality. Mixed samples are acceptable.

Q2. What about the lead time?

A:Sample needs 3-5 days, mass production time needs 1-2 weeks for order quantity more than

Q3. Do you have any MOQ limit for led light order?

A: Low MOQ, 1pc for sample checking is available

Q4. How do you ship the goods and how long does it take to arrive?

A: We usually ship by DHL, UPS, FedEx or TNT. It usually takes 3-5 days to arrive. Airline and sea shipping also optional.

Q5. How to proceed an order for led light?

A: Firstly let us know your requirements or application.

Secondly We quote according to your requirements or our suggestions.

Thirdly customer confirms the samples and places deposit for formal order.

Fourthly We arrange the production.

Q6. Is it OK to print my logo on led light product?

A: Yes. Please inform us formally before our production and confirm the design firstly based on our sample.

Q7: Do you offer guarantee for the products?

A: Yes, we offer 3-5 years warranty to our products.

Q8: How to deal with the faulty?

A: Firstly, Our products are produced in strict quality control system and the defective rate will be less than 0.2%.

Secondly, during the guarantee period, we will send new lights with new order for small quantity. For defective batch products, we will repair them and resend them to you or we can discuss the solution including re-call according to real situation.

SOLAR LIGHT Beijing Silk Road Enterprise Management Services Co.,LTD



17733330123



miclecleanmo@gmail.com



solarpanelstreetlight.com

No 41, Dongsihuan Zhong Road, Chaoyang District, Beijing, 100025, P.R.C