



## 18 W / 36 W 4 Foot Led Tube Light Aluminum And PC Material Long Life Span

### Our Product Introduction

for more products please visit us on [solarpanelstreetlight.com](http://solarpanelstreetlight.com)

#### Basic Information

- Place of Origin: CHINA
- Brand Name: CO-SHINE
- Certification: CE RoHS
- Model Number: CS-TL-36W
- Minimum Order Quantity: 20
- Price: negotiation
- Packaging Details: 25pcs/carton, Carton size: 125\*19\*19cm  
G.W.: 10KG
- Delivery Time: 3-5 days
- Payment Terms: Western Union, L/C, T/T, MoneyGram
- Supply Ability: 20,000PCS Per month



#### Product Specification

- Watt: 36W
- Base: T8
- Dimension: 1200mm
- LED Chip: Epistar SMD2835
- Lumen: 3600lm
- Material: Aluminum + PC
- Beam Angle: 120degree
- Warranty: 3 Years
- Highlight: **led fluorescent tube**



#### More Images



## Product Description

### Office 8ft Led Linear Light Wall Mounted Led Tube Lamp SMD2835 Chip

#### Applications

Office  
Meeting room  
Supermarket  
Clothing stores  
Home furnishing lighting

#### Features

- Latest LED technology
- Advanced Thermal sensitive lighting dimming control
- Equal to HPS/MHD Size
- One Size more Wattages
- Easy to install and connect
- Suitable for all the traditional light fixtures

#### Benefits

- Directly replacing HPS/MHD light source
- Polygonal, easy to install and replace
- Utilizing same lighting fixture , saving investment cost

#### Specification

<b>Power</b>	<b>36W</b>	<b>Material</b>	Aluminium+PC
<b>LED Source</b>	SMD2835	<b>PC Cover</b>	Frosted
<b>Input Vol</b>	85-265VAC 50-60HZ	<b>CCT</b>	2800-6500K
<b>Power Factor</b>	≥0.90	<b>CRI</b>	>80Ra
<b>Beam angle</b>	120°	<b>Lumen</b>	3600Lm
<b>Dimension</b>	1200x75x23mm	<b>Lamp Base</b>	T8

#### Product description

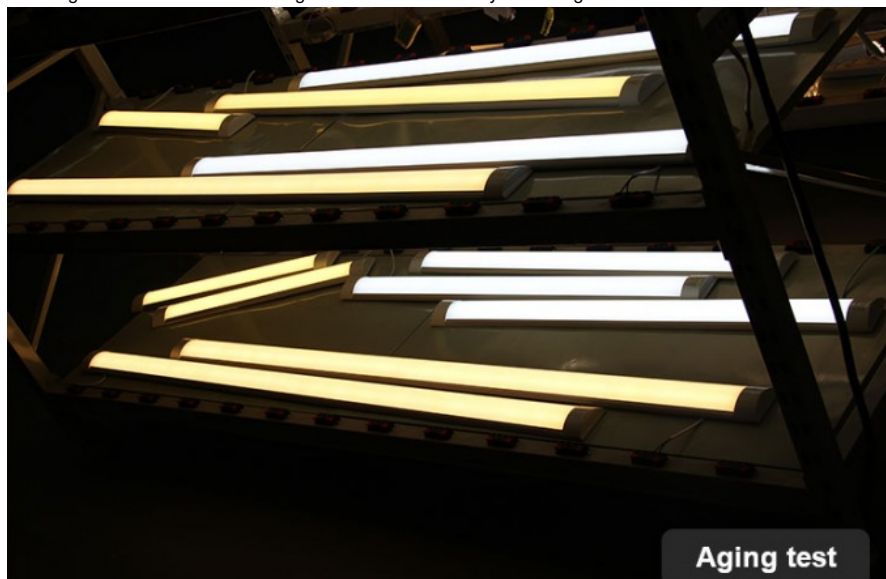
Energy saving, saving more than 80% energy compare to traditional lights.

Cost savings, low consumption of power and the rate of conversion is over 95%.

Long life, normally used for more than 50,000hrs

Eco-friendly, no flicker, no harmful substances such as UV, infrared radiation, mercury elements.

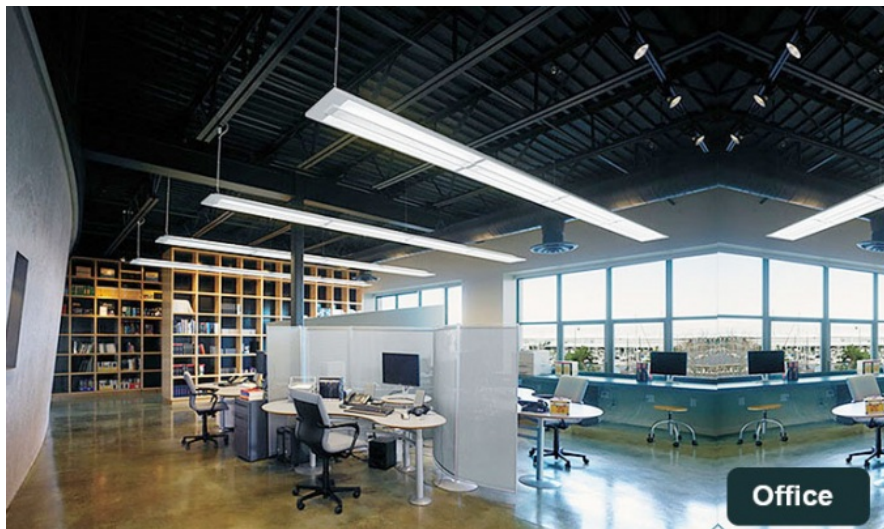
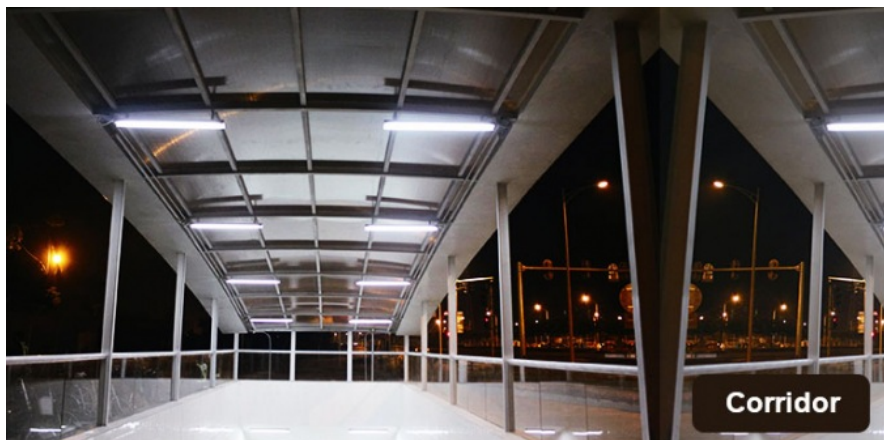
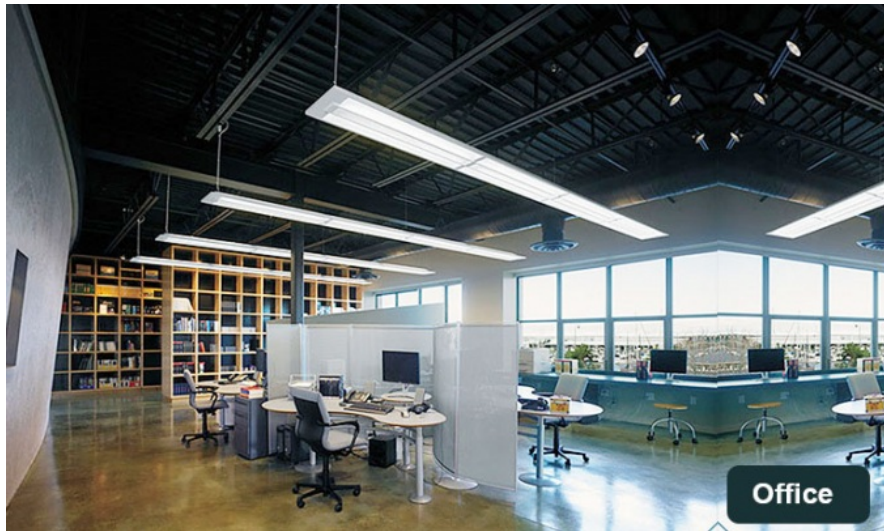
Breakage Resistance: solid LED light source and not easy to damage.

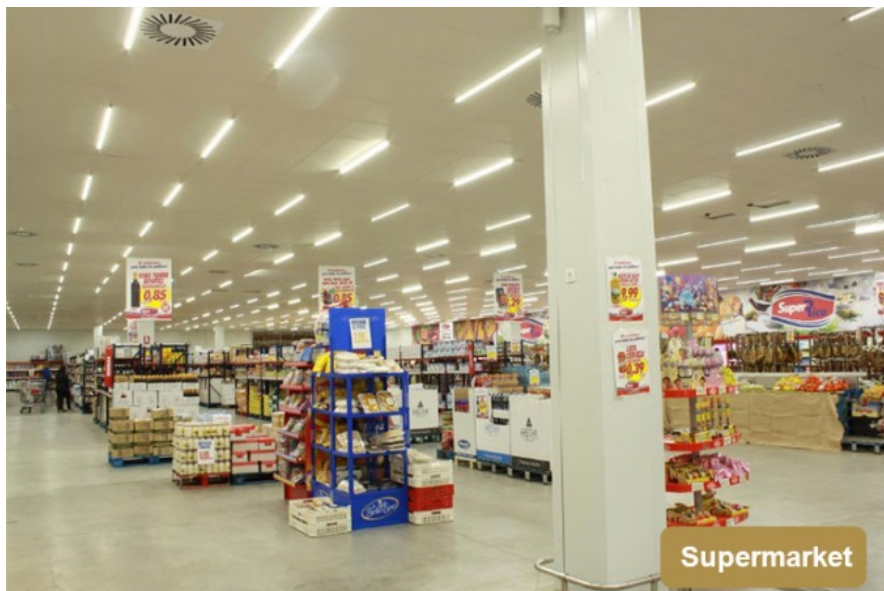


1. CE, RoHS,UL,DLC, PSE Certificated.
2. IP level: IP55.
3. led chip:SMD2835
4. luminous efficiency:100 lm / w
5. Material:Aluminium+PC
6. Lead time: 3-5 days for samples, 7-15 days for bulk quantity order after receipt of deposit.

7. 3 years guarantee, If there is any problem, We will repair or change for free.

8. Applications: Warehouse, workshop, factory, gas station, supermarket, hall ect.





## FAQ

**Q1.** Can I have a sample order for led light?

A: Yes, we welcome sample order to test and check quality. Mixed samples are acceptable.

**Q2.** What about the lead time?

A: Sample needs 3-5 days, mass production time needs 1-2 weeks for order quantity more than

**Q3.** Do you have any MOQ limit for led light order?

A: Low MOQ, 1pc for sample checking is available

**Q4.** How do you ship the goods and how long does it take to arrive?

A: We usually ship by DHL, UPS, FedEx or TNT. It usually takes 3-5 days to arrive. Airline and sea shipping also optional.

**Q5.** How to proceed an order for led light?

A: Firstly let us know your requirements or application.

Secondly We quote according to your requirements or our suggestions.

Thirdly customer confirms the samples and places deposit for formal order.

Fourthly We arrange the production.

**Q6.** Is it OK to print my logo on led light product?

A: Yes. Please inform us formally before our production and confirm the design firstly based on our sample.

**Q7:** Do you offer guarantee for the products?

A: Yes, we offer 3-5 years warranty to our products.

**Q8:** How to deal with the faulty?

A: Firstly, Our products are produced in strict quality control system and the defective rate will be less than 0.2%.

Secondly, during the guarantee period, we will send new lights with new order for small quantity. For defective batch products, we will repair them and resend them to you or we can discuss the solution including re-call according to real situation.

**SOLAR LIGHT Beijing Silk Road Enterprise Management Services Co.,LTD**

☎ 17733330123

✉ miclecleanmo@gmail.com

🌐 solarpanelstreetlight.com

No 41, Dongsihuan Zhong Road, Chaoyang District, Beijing, 100025, P.R.C